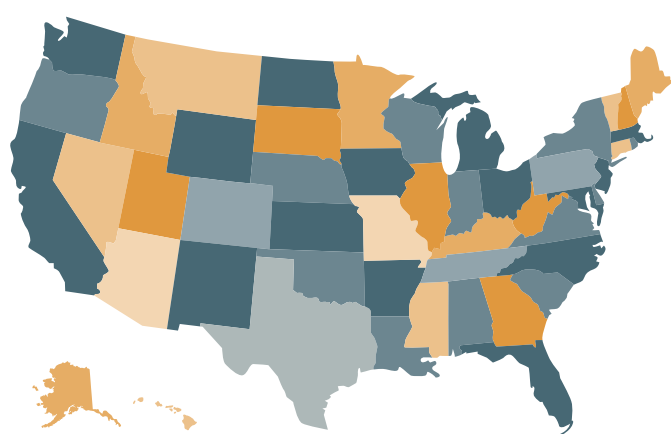


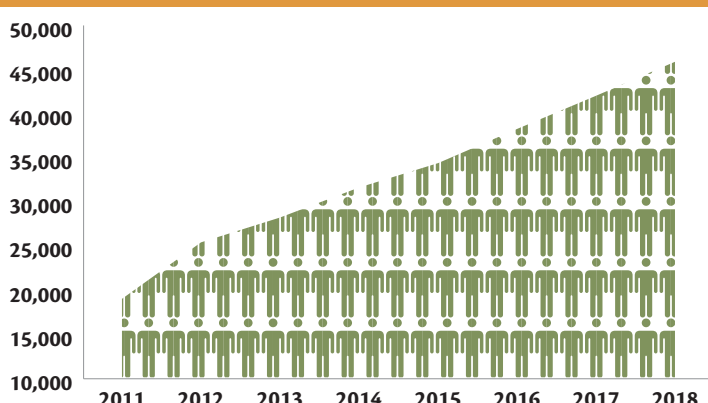
PACE IS GROWING



PACE ENROLLMENT ELIGIBILITY

- Age 55 or over
- Live in the PACE service area
- Certified to need nursing home care
- Able to live safely in the community with PACE support at time of enrollment

PACE ENROLLMENT 45,000+



123 Sponsoring Organizations

250 PACE Centers
as of 2/1/18

PACE SERVES OUR SENIORS

NEED NURSING HOME LEVEL OF CARE

100%

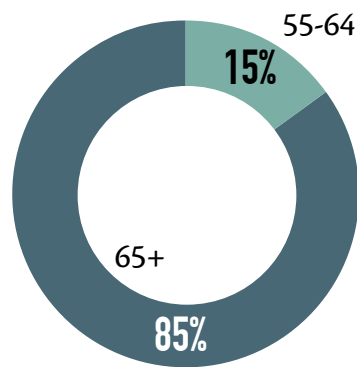
95%

Live in the community

5%

Live in nursing homes

76
Average age



70% WOMEN
30% MEN

16 TRIPS
PER MONTH PER PARTICIPANT

NEED HELP WITH ACTIVITIES OF DAILY LIVING



Dressing



Bathing



Transferring



Toileting



Eating



Walking



1-2: 26%

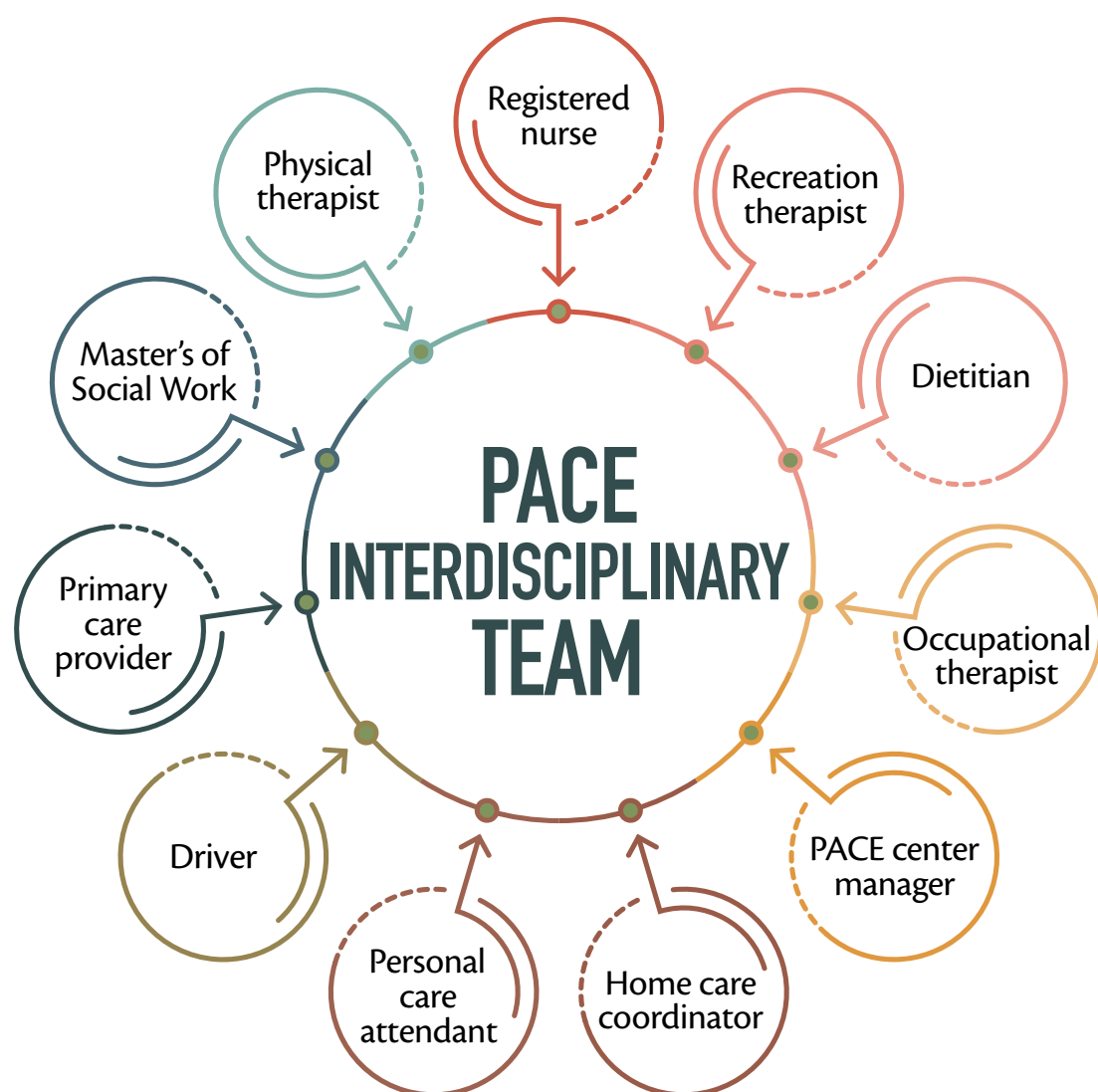
3-4: 25%

5-6: 35%

Average number of ADLs with which participants need assistance

PACE PROVIDES HIGH-QUALITY CARE

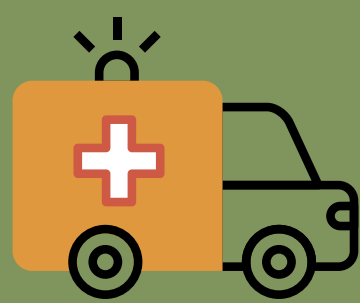
EMPLOYEES OF PACE ORGANIZATIONS



PACE
HOSPITAL READMISSION RATE

19.1%

30-Day All Cause Hospital Readmission Rates. Comparable rate for all age 65 dual eligible enrollees is 22.9% and Medicare fee-for-service beneficiaries is 19.6%.



1 LESS THAN
ER VISIT
PER YEAR

TOP 5 DIAGNOSES OF PACE PARTICIPANTS

- ☒ Vascular Disease
- ☒ Diabetes with Chronic Complications
- ☒ Congestive Heart Failure
- ☒ Major Depressive, Bipolar and Paranoid Disorders
- ☒ Chronic Obstructive Pulmonary Disease



46% Dementia

IN AN AVERAGE MONTH

9 Prescriptions

8 Visits to PACE Center

10 Personal Care Contacts

4 Therapy (PT/OT) Encounters

PACE STRENGTHENS THE COMMUNITY



PACE SERVES

13,666 MEALS A DAY

PACE PARTICIPANTS

- 90%** Are dually eligible for Medicaid and Medicare
- 9%** Are Medicaid-only
- 1%** Pay a premium (Medicare-only or other)

WHAT KIND OF ORGANIZATIONS OPERATE PACE?

